



How to Change a Camera's Encoding Parameters on a Uniview NVR?

How to Change a Camera's Encoding Parameters on a Uniview NVR?

Description

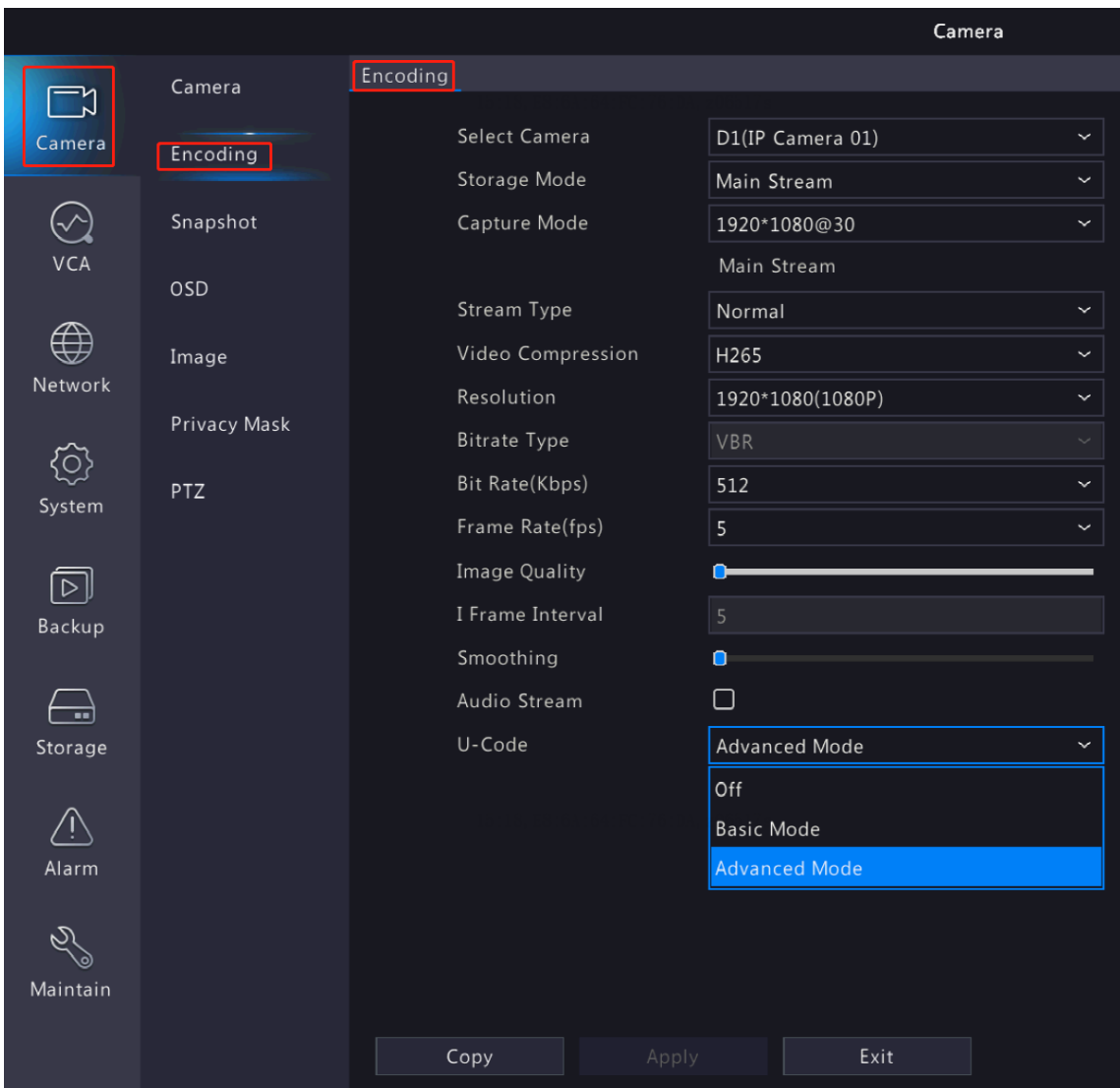
Note: This method is applicable to most of the scenarios encountered problems, if the method still cannot solve your problem, it is recommended to consult our Tech Support Team.

https://global.uniview.com/Support/Service_Hotline/

Operating Steps

NVR's GUI

Change the encoding parameters of cameras from the NVR's GUI under **Menu>Camera>Encoding**.



Note: the configurations can be copied to the rest of channels by clicking **Copy** on the bottom.

| | | | |
|---------|--|----------|-----------|
| Title | How to Change a Camera's Encoding Parameters on a Uniview NVR? | Version: | V1.1 |
| Product | NVR | Date | 9/26/2023 |

NVR's Web UI

Make change on the NVR's web interface under **Setup>Camera>Encoding**.

